

## 2008 Shareownership Survey

I. Shareownership Survey (Market Value Basis)		<Reference>II. Shareownership Survey (Unit-of-Share Basis)	
Table 1	1	Reference - Table 1	8
No. of Shareholders by Type of Shareholder		No. of Unit Shares Held by Type of Shareholder	
Chart 1	2	Reference - Chart 1	9
No. of Individual Shareholders		Historical Data: Distribution Percent of Unit	
Table 2	3	Reference - Table 2	10
Shareholding at Market Value		Shares by Type of Shareholder	
Chart 2	4	Historical Data: Distribution Percent of Unit	
Historical Data: Distribution Percent of Market		Shares by Type of Shareholder	
Value Owned by Type of Shareholder			
Table 3	5		
Historical Data: Distribution Percent of Market			
Value Owned by Type of Shareholder			
Table 4	6~7		
No. of Individual Shareholders & Shareholding			
at Market Value of Companies Reducing			
Minimum Transactional Units			

**[Table 1] No. of Shareholders by Type of Shareholder**

Survey Year	2007		2008		Change [% Change]		Change in % of Total
No. of Companies	2,957		2,909		-48		-
Total	persons	% of Total	persons	% of Total	persons	%	% points
	41,215,748	( 100.0)	43,462,858	( 100.0)	2,247,110	[ 5.5]	-
(1) Govt. & Local Govt.	1,366	( 0.0)	1,652	( 0.0)	286	[ 20.9]	0.0
(2) Financial Institutions	117,258	( 0.3)	100,832	( 0.2)	-16,426	[-14.0]	-0.1
a. City & Regional Banks	19,699	( 0.0)	18,310	( 0.0)	-1,389	[-7.1]	0.0
b. Trust Banks	45,662	( 0.1)	36,205	( 0.1)	-9,457	[-20.7]	0.0
(Investment Trusts)	11,622	( 0.0)	11,303	( 0.0)	-319	[-2.7]	0.0
(Annuity Trusts)	9,253	( 0.0)	8,775	( 0.0)	-478	[-5.2]	0.0
c. Life Insurance Cos.	23,058	( 0.1)	21,774	( 0.1)	-1,284	[-5.6]	0.0
d. Non-life Insurance Cos.	5,231	( 0.0)	4,921	( 0.0)	-310	[-5.9]	0.0
e. Other Financial Inst.	23,608	( 0.1)	19,622	( 0.0)	-3,986	[-16.9]	-0.1
(3) Securities Companies	75,158	( 0.2)	66,645	( 0.2)	-8,513	[-11.3]	0.0
(4) Business Corporations	781,630	( 1.9)	773,133	( 1.8)	-8,497	[-1.1]	-0.1
(5) Foreigners	281,077	( 0.7)	284,069	( 0.7)	2,992	[ 1.1]	0.0
(6) Individuals	39,959,259	( 97.0)	42,236,527	( 97.2)	2,277,268	[ 5.7]	0.2

(Note) 1. One shareholder is counted more than one if such shareholder owns shares of two or more companies.

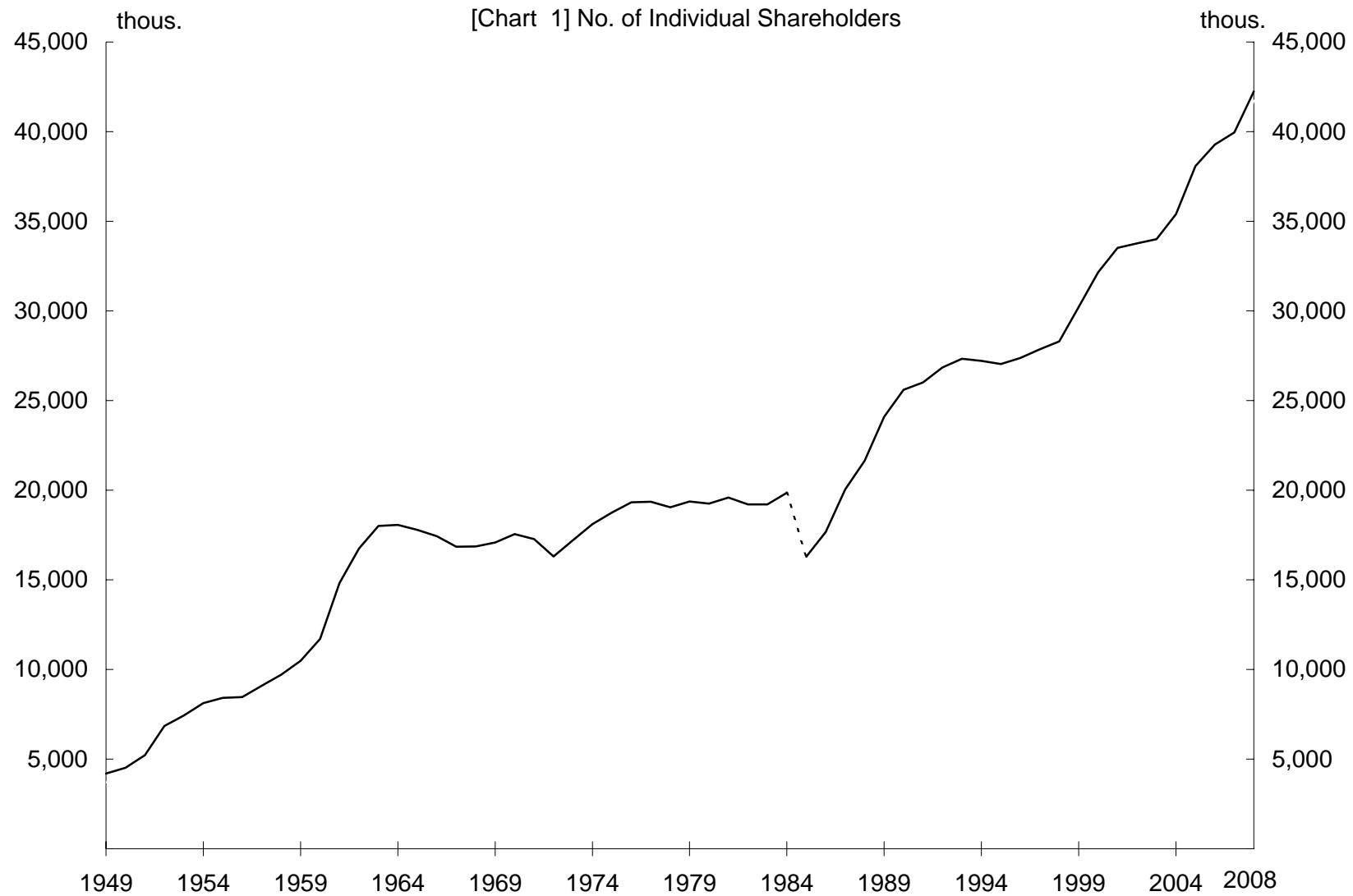
2. The numbers of Investment Trusts and Annuity Trusts are included in either item a or b.

3. Foreigners: non-Japanese corporations and individuals

4. The number of own shares held by a listed company is included in a type to which such company belongs.

The number of listed companies holding own shares in 2008 survey is 2,610.

5. Figures less than the unit are omitted, except that in the case of percentage figures, a fraction of 0.5 or more is counted as a whole number and a fraction less than that is omitted.



(Note) Survey has been conducted on a "Unit-of-Share" basis since 1985 Survey.

**[Table 2] Shareholding at Market Value**

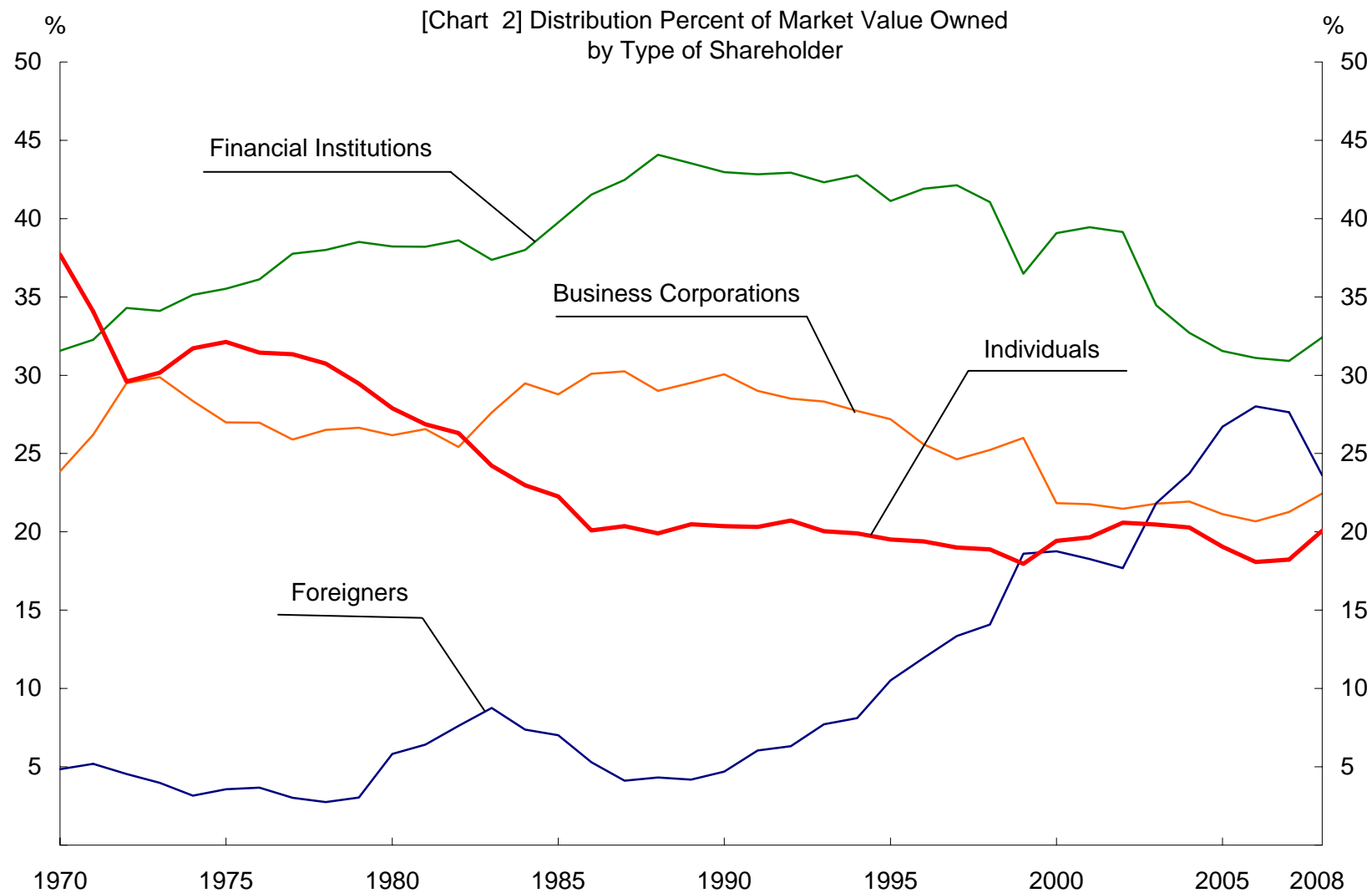
Survey Year	2007		2008		Change [% Change]		Change in % of Total
No. of Companies	2,957		2,909		-48		-
	100 mil. yen	% of Total	100 mil. yen	% of Total	100 mil. yen	%	% point
Total	4,002,313	( 100.0)	2,601,532	( 100.0)	-1,400,780	[ -35.0]	-
(1) Govt. & Local Govt.	15,646	( 0.4)	11,356	( 0.4)	-4,290	[ -27.4]	0.0
(2) Financial Institutions	1,237,432	( 30.9)	843,415	( 32.4)	-394,017	[ -31.8]	1.5
a. City & Regional Banks	189,341	( 4.7)	127,247	( 4.9)	-62,094	[ -32.8]	0.2
b. Trust Banks	702,372	( 17.5)	495,578	( 19.0)	-206,793	[ -29.4]	1.5
(Investment Trusts)	195,035	( 4.9)	132,129	( 5.1)	-62,906	[ -32.3]	0.2
(Annuity Trusts)	140,545	( 3.5)	92,918	( 3.6)	-47,626	[ -33.9]	0.1
c. Life Insurance Cos.	219,017	( 5.5)	140,579	( 5.4)	-78,438	[ -35.8]	-0.1
d. Non-life Insurance Cos.	88,531	( 2.2)	55,159	( 2.1)	-33,371	[ -37.7]	-0.1
e. Other Financial Inst.	38,168	( 1.0)	24,849	( 1.0)	-13,318	[ -34.9]	0.0
(3) Securities Companies	62,214	( 1.6)	26,803	( 1.0)	-35,410	[ -56.9]	-0.6
(4) Business Corporations	851,372	( 21.3)	583,890	( 22.4)	-267,481	[ -31.4]	1.1
(5) Foreigners	1,106,171	( 27.6)	613,971	( 23.6)	-492,199	[ -44.5]	-4.0
(6) Individuals	729,476	( 18.2)	522,095	( 20.1)	-207,380	[ -28.4]	1.9

(Note) 1. The market value of public pension funds is not included in that of Annuity Trusts.

2. Foreigners: non-Japanese corporations and individuals

3. The market value of own shares held by a listed company is included in a type to which such company belongs. Total market value of own shares held by listed companies in 2008 Survey is 9,370.2billion yen, accounting for 3.60% of total market value of all companies surveyed.

4. Figures less than the unit are omitted, except that in the case of percentage figures and average figures, a fraction of 0.5 or more is counted as a whole number and a fraction less than that is omitted.



(Notes) 1. Survey has been conducted on a "Unit-of-Share" basis since 1985 Survey.  
 2. The market value of Financial Institutions excludes that of City & Regional Banks.

**[Table 3] Distribution Percent of Market Value Owned by Type of Shareholder**

(Units : %)

Survey Year	Govt. & Local Govt.	Financial Institutions	City & Regional Banks	Trust Banks	Trusts		Life Insurance Cos.	Non-life Insurance Cos.	Other Fin. Institutions	Securities Companies	Business Corps.	Foreigners	Individuals
					Investment Trusts	Annuity Trusts							
1970	0.6	31.6	15.8	-	2.1	-	10.0	3.7	2.1	1.3	23.9	4.9	37.7
1975	0.4	35.5	19.0	-	2.2	-	10.2	4.4	2.0	1.4	27.0	3.6	32.1
1980	0.4	38.2	19.9	-	1.9	0.4	11.5	4.6	2.3	1.5	26.2	5.8	27.9
1985	0.3	39.8	20.9	-	1.7	0.8	12.3	4.1	2.4	1.9	28.8	7.0	22.3
1986	0.9	41.5	14.9	7.3	1.9	1.0	12.8	4.0	2.5	2.1	30.1	5.3	20.1
1987	0.5	42.5	14.9	8.6	2.6	1.1	12.4	4.0	2.6	2.3	30.3	4.1	20.4
1988	0.4	44.1	15.7	9.8	3.1	1.0	12.6	4.1	2.0	2.3	29.0	4.3	19.9
1989	0.3	43.5	15.7	10.2	3.7	0.9	11.8	3.9	1.9	2.0	29.5	4.2	20.5
1990	0.3	43.0	15.7	9.8	3.7	0.9	12.0	3.9	1.6	1.7	30.1	4.7	20.4
1991	0.3	42.8	15.6	9.7	3.4	1.0	12.2	3.9	1.4	1.5	29.0	6.0	20.3
1992	0.3	42.9	15.6	9.9	3.2	1.2	12.4	3.8	1.2	1.2	28.5	6.3	20.7
1993	0.3	42.3	15.4	10.0	2.9	1.4	12.1	3.7	1.1	1.3	28.3	7.7	20.0
1994	0.3	42.8	15.4	10.6	2.6	1.6	12.0	3.7	1.1	1.2	27.7	8.1	19.9
1995	0.3	41.1	15.1	10.3	2.2	1.8	11.1	3.6	1.0	1.4	27.2	10.5	19.5
1996	0.2	41.9	15.1	11.2	2.0	2.4	11.1	3.6	0.9	1.0	25.6	11.9	19.4
1997	0.2	42.1	14.8	12.4	1.6	3.8	10.6	3.5	0.9	0.7	24.6	13.4	19.0
1998	0.2	41.0	13.7	13.5	1.4	4.7	9.9	3.2	0.8	0.6	25.2	14.1	18.9
1999	0.1	36.5	11.3	13.6	2.2	5.0	8.1	2.6	0.9	0.8	26.0	18.6	18.0
2000	0.2	39.1	10.1	17.4	2.8	5.5	8.2	2.7	0.7	0.7	21.8	18.8	19.4
2001	0.2	39.4	8.7	19.9	3.3	6.0	7.5	2.7	0.7	0.7	21.8	18.3	19.7
2002	0.2	39.1	7.7	21.4	4.0	5.8	6.7	2.6	0.7	0.9	21.5	17.7	20.6
2003	0.2	34.5	5.9	19.6	3.7	4.5	5.7	2.4	0.9	1.2	21.8	21.8	20.5
2004	0.2	32.7	5.3	18.8	3.9	4.0	5.4	2.2	1.0	1.2	21.9	23.7	20.3
2005	0.2	31.6	4.7	18.4	4.4	3.6	5.3	2.1	1.0	1.4	21.1	26.7	19.1
2006	0.3	31.1	4.6	17.9	4.7	3.5	5.4	2.2	1.0	1.8	20.7	28.0	18.1
2007	0.4	30.9	4.7	17.5	4.9	3.5	5.5	2.2	1.0	1.6	21.3	27.6	18.2
2008	0.4	32.4	4.9	19.0	5.1	3.6	5.4	2.1	1.0	1.0	22.4	23.6	20.1
High (Year)	0.9(1986)	44.1(1988)	20.9(1985)	21.4(2002)	5.1(2008)	6.0(2001)	12.8(1986)	4.8(1979)	2.6(1987)	2.3(1988)	30.3(1987)	28.0(2006)	37.7(1970)
Low (Year)	0.1(1999)	30.9(2007)	4.6(2006)	7.3(1986)	1.4(1998)	0.4(1982)	5.3(2005)	2.1(2008)	0.7(2001)	0.6(1998)	20.7(2006)	2.7(1978)	18.0(1999)

(Notes) The number of Trust Banks are included in that of City & Regional Banks in and before 1985 Survey.

**[Table 4] No. of Individual Shareholders & Shareholdings at Market Value of Companies Reducing Minimum Transactional Units**  
(except Companies Reducing Minimum Transactional Units followed by capital reduction and stock union)

(1) Companies Reducing 1 Unit = 1,000 Shares to 1 Unit = 100 Shares (9 Companies)

Companies		No. of Individual Shareholders							Individual Shareholdings at Market Value		
		2007		2008		Change [% Change]		Change in % of Total	2007	2008	Change in % of Total
		persons	% of Total	persons	% of Total	persons	%	% points	% of Total	% of Total	% points
4369	Tri Chemical Laboratories Inc.	225	( 87.2)	1,254	( 97.2)	1,029	[ 457.3]	10.0	51.8	66.5	14.7
4506	Dainippon Sumitomo Pharma Co.,Ltd.	10,823	( 94.7)	15,053	( 95.2)	4,230	[ 39.1]	0.5	7.4	7.6	0.2
6118	AIDA ENGINEERING,LTD.	4,810	( 93.3)	6,297	( 94.6)	1,487	[ 30.9]	1.3	21.0	23.0	2.0
6752	Panasonic Corporation	145,169	( 97.9)	246,627	( 98.4)	101,458	[ 69.9]	0.5	17.3	20.5	3.2
7493	MARUMIYASTORE CO.,LTD.	291	( 82.4)	337	( 82.0)	46	[ 15.8]	-0.4	67.8	66.7	-1.1
8118	KING Co.,Ltd.	1,852	( 95.0)	2,755	( 96.3)	903	[ 48.8]	1.3	43.1	48.4	5.3
8328	Sapporo Hokuyo Holdings,Inc.	5,409	( 73.9)	8,410	( 79.8)	3,001	[ 55.5]	5.9	7.3	8.5	1.2
8411	Mizuho Financial Group,Inc.	346,877	( 96.4)	473,370	( 96.8)	126,493	[ 36.5]	0.4	16.4	24.2	7.8
9899	Sunday's Sun INC.	1,806	( 95.5)	2,158	( 96.2)	352	[ 19.5]	0.7	16.1	14.6	-1.5

(2) Companies Splitting Shares 1 to 1.5 or more (23 Companies)

Companies		(Stock split ratio)	No. of Individual Shareholders						Individual Shareholdings at Market Value			
			2007		2008		Change [% Change]		Change in % of Total	2007	2008	Change in % of Total
			persons	% of Total	persons	% of Total	persons	%	% points	% of Total	% of Total	% points
2059	UNICHARM PETCARE CORPORATION	(1:2)	2,847	( 93.4)	5,258	( 95.7)	2,411	[ 84.7]	2.3	14.2	14.5	0.3
2120	NEXT Co.,Ltd.	(1:2)	2,710	( 96.6)	1,655	( 95.4)	-1,055	[ -38.9]	-1.2	68.6	60.5	-8.1
2134	Sun Capital Management Corp.	(1:2)	672	( 94.9)	651	( 95.3)	-21	[ -3.1]	0.4	90.1	89.8	-0.3
2175	SMS CO.,LTD.	(1:3)	602	( 94.2)	640	( 88.8)	38	[ 6.3]	-5.4	71.1	60.9	-10.2
2371	Kakaku.com,Inc.	(1:2)	3,017	( 93.3)	5,089	( 94.7)	2,072	[ 68.7]	1.4	10.2	9.4	-0.8
2484	YUME NO MACHI SOUZOU IINKAI CO.,LTD	(1:3)	1,412	( 96.4)	1,497	( 96.3)	85	[ 6.0]	-0.1	33.1	29.3	-3.8
3049	ENOTECA CO.,LTD.	(1:2)	2,040	( 96.7)	2,873	( 97.6)	833	[ 40.8]	0.9	50.3	58.8	8.5
3092	START TODAY CO.,LTD.	(1:3)	604	( 86.7)	1,310	( 91.5)	706	[ 116.9]	4.8	76.7	76.8	0.1
3245	DEAR LIFE CO.,LTD.	(1:3)	786	( 96.0)	553	( 92.8)	-233	[ -29.6]	-3.2	74.2	74.2	0.0
3620	DIGITAL Hearts Co.,Ltd.	(1:3)	657	( 95.1)	2,218	( 96.6)	1,561	[ 237.6]	1.5	88.6	81.6	-7.0
3712	Information Planning CO.,LTD.	(1:2)	1,714	( 97.5)	1,997	( 97.4)	283	[ 16.5]	-0.1	76.8	78.8	2.0
3843	FreeBit Co.,Ltd.	(1:3)	1,409	( 96.6)	1,798	( 95.8)	389	[ 27.6]	-0.8	70.9	62.6	-8.3
3859	Synergy Marketing, Inc.	(1:2)	813	( 96.2)	995	( 96.3)	182	[ 22.4]	0.1	73.7	72.6	-1.1
5310	TOYO TANSO CO.,LTD.	(1:1.5)	6,077	( 95.1)	7,009	( 95.2)	932	[ 15.3]	0.1	56.9	55.0	-1.9
6255	NPC Incorporated	(1:4)	1,337	( 95.2)	5,557	( 96.9)	4,220	[ 315.6]	1.7	69.1	61.6	-7.5
6264	Marumae Co.,Ltd.	(1:2)	620	( 93.8)	674	( 92.5)	54	[ 8.7]	-1.3	82.7	79.8	-2.9
7313	TS TECH CO.,LTD.	(1:2)	3,961	( 92.8)	11,293	( 97.3)	7,332	[ 185.1]	4.5	12.9	14.3	1.4
7604	UMENOHANA CO.,LTD.	(1:2)	8,527	( 98.6)	9,314	( 98.7)	787	[ 9.2]	0.1	64.9	65.0	0.1
7613	SIIX CORPORATION	(1:2)	1,674	( 91.9)	7,980	( 97.8)	6,306	[ 376.7]	5.9	20.0	25.1	5.1
7839	SHOEI CO.,LTD.	(1:2)	1,278	( 94.0)	3,771	( 97.0)	2,493	[ 195.1]	3.0	28.9	35.4	6.5
7846	PILOT CORPORATION	(1:5)	2,542	( 91.6)	4,178	( 94.0)	1,636	[ 64.4]	2.4	27.5	27.3	-0.2
7965	Zojirushi Corporation	(1:3)	978	( 87.2)	1,289	( 89.8)	311	[ 31.8]	2.6	41.6	42.2	0.6
9652	N.I.C. Corporation	(1:2)	3,345	( 96.3)	3,137	( 95.9)	-208	[ -6.2]	-0.4	38.5	38.8	0.3

**[Reference-Table 1] No. of Unit Shares Held by Type of Shareholder**

Survey Year	2007		2008		Change [% Change]		Change in % of Total
No. of Companies	2,957		2,909		-48		-
	units	% of Total	units	% of Total	units	%	% points
Total	1,664,742,483	(100.0)	1,813,949,112	(100.0)	149,206,629	[ 9.0]	-
(1) Govt. & Local Govt.	3,605,382	( 0.2)	3,741,022	( 0.2)	135,640	[ 3.8]	0.0
(2) Financial Institutions	411,120,462	( 24.7)	482,498,325	( 26.6)	71,377,863	[ 17.4]	1.9
a. City & Regional Banks	61,022,970	( 3.7)	66,133,718	( 3.6)	5,110,748	[ 8.4]	-0.1
b. Trust Banks	242,481,965	( 14.6)	299,138,391	( 16.5)	56,656,426	[ 23.4]	1.9
(Investment Trusts)	68,661,140	( 4.1)	76,975,375	( 4.2)	8,314,235	[ 12.1]	0.1
(Annuity Trusts)	49,420,561	( 3.0)	56,941,929	( 3.1)	7,521,368	[ 15.2]	0.1
c. Life Insurance Cos.	66,661,037	( 4.0)	73,134,413	( 4.0)	6,473,376	[ 9.7]	0.0
d. Non-life Insurance Cos.	27,552,526	( 1.7)	29,280,765	( 1.6)	1,728,239	[ 6.3]	-0.1
e. Other Financial Inst.	13,401,964	( 0.8)	14,811,038	( 0.8)	1,409,074	[ 10.5]	0.0
(3) Securities Companies	25,116,929	( 1.5)	17,676,806	( 1.0)	-7,440,123	[ -29.6]	-0.5
(4) Business Corporations	410,806,478	( 24.7)	456,156,949	( 25.1)	45,350,471	[ 11.0]	0.4
(5) Foreigners	424,588,714	( 25.5)	400,579,042	( 22.1)	-24,009,672	[ -5.7]	-3.4
(6) Individuals	389,504,518	( 23.4)	453,296,968	( 25.0)	63,792,450	[ 16.4]	1.6

(Note) 1. The number of public pension funds is not included in that of Annuity Trusts.

2. The numbers of Investment Trusts and Annuity Trusts are included in either item a or b.

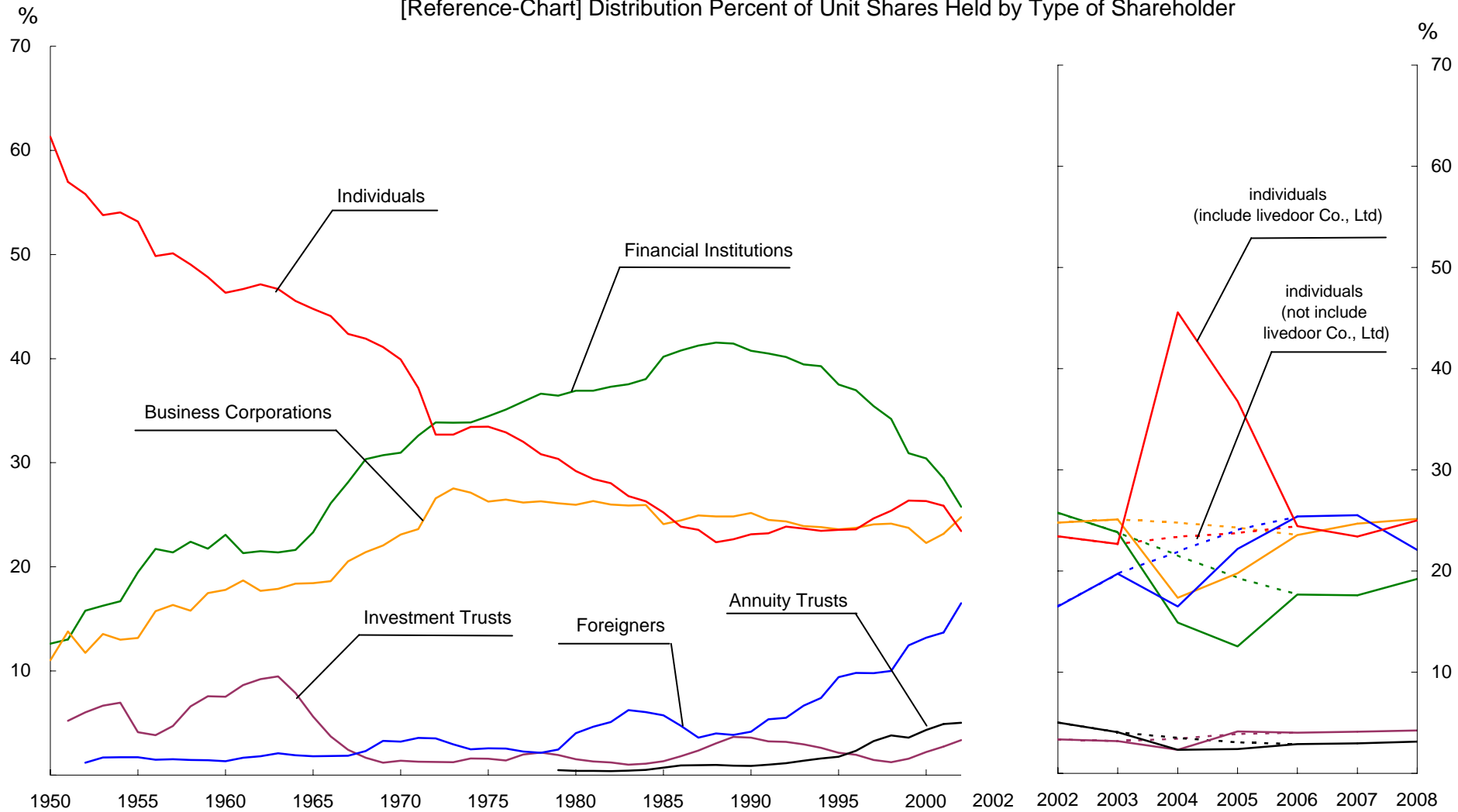
3. Foreigners: non-Japanese corporations and individuals

4. The number of own shares held by a listed company is included in a type to which such company belongs.

Total number of own shares held by listed companies in 2008 survey is 51,306,467 units, accounting for 2.83% of total.

5. Figures less than the unit are omitted, except that in the case of percentage figures, a fraction of 0.5 or more is counted as a whole number and a fraction less than that is omitted.

[Reference-Chart] Distribution Percent of Unit Shares Held by Type of Shareholder



- (Notes) 1. Survey has been conducted on a "Unit-of-Share" basis since 1985 Survey.  
 2. The number of Financial Institutions excludes that of Investment Trusts and Annuity Trusts; however, the number of Annuity Trusts is included in that of Financial Institutions in and before 1978 Survey.

**[Reference-Table 2] Historical Data: Distribution Percent of Unit Shares Held by Type of Shareholder**

(Units: %)

Survey Year	Govt. & Local Govt.	Financial Institutions	City & Regional Banks	Trust Banks	Trusts		Life Insurance Cos.	Non-life Insurance Cos.	Other Fin. Institutions	Securities Companies	Business Corps.	Foreigners	Individuals
					Investment Trusts	Annuity Trusts							
1949	2.8	9.9	-	-	-	-	-	-	-	12.6	5.6	-	69.1
1950	3.1	12.6	-	-	-	-	-	-	-	11.9	11.0	-	61.3
1955	0.4	23.6	-	-	4.1	-	-	-	-	7.9	13.2	1.7	53.2
1960	0.2	30.6	-	-	7.5	-	-	-	-	3.7	17.8	1.3	46.3
1965	0.2	29.0	-	-	5.6	-	-	-	-	5.8	18.4	1.8	44.8
1970	0.2	32.3	15.4	-	1.4	-	11.1	4.0	1.8	1.2	23.1	3.2	39.9
1975	0.2	36.0	18.0	-	1.6	-	11.5	4.7	1.9	1.4	26.3	2.6	33.5
1980	0.2	38.8	19.2	-	1.5	0.4	12.5	4.9	2.2	1.7	26.0	4.0	29.2
1985	0.8	42.2	21.6	-	1.3	0.7	13.5	4.5	2.6	2.0	24.1	5.7	25.2
1986	0.9	43.5	16.1	7.1	1.8	0.9	13.3	4.4	2.6	2.5	24.5	4.7	23.9
1987	0.8	44.6	15.9	8.4	2.4	1.0	13.2	4.3	2.8	2.5	24.9	3.6	23.6
1988	0.7	45.6	16.3	9.9	3.1	1.0	13.1	4.2	2.1	2.5	24.9	4.0	22.4
1989	0.7	46.0	16.4	10.3	3.7	0.9	13.1	4.1	2.1	2.0	24.8	3.9	22.6
1990	0.6	45.2	16.4	9.8	3.6	0.9	13.2	4.1	1.8	1.7	25.2	4.2	23.1
1991	0.6	44.7	16.3	9.7	3.2	1.0	13.2	4.0	1.6	1.5	24.5	5.4	23.2
1992	0.6	44.5	16.2	10.0	3.2	1.1	13.0	4.0	1.3	1.2	24.4	5.5	23.9
1993	0.6	43.8	16.0	10.1	3.0	1.4	12.7	3.8	1.2	1.3	23.9	6.7	23.7
1994	0.7	43.5	15.9	10.6	2.6	1.6	12.2	3.7	1.1	1.1	23.8	7.4	23.5
1995	0.6	41.4	15.4	10.1	2.1	1.8	11.2	3.6	1.2	1.4	23.6	9.4	23.6
1996	0.5	41.3	15.1	10.8	2.0	2.3	10.9	3.4	1.0	1.1	23.8	9.8	23.6
1997	0.5	40.2	14.6	11.1	1.4	3.3	10.2	3.3	1.0	0.8	24.1	9.8	24.6
1998	0.5	39.3	14.0	11.7	1.2	3.8	9.4	3.2	1.0	0.7	24.1	10.0	25.4
1999	0.5	36.1	12.8	10.9	1.6	3.6	8.3	2.9	1.2	0.9	23.7	12.4	26.4
2000	0.4	37.0	11.5	14.3	2.2	4.3	7.6	2.8	0.8	0.8	22.3	13.2	26.3
2001	0.4	36.2	9.4	16.6	2.7	4.9	6.7	2.7	0.7	0.8	23.2	13.7	25.9
2002	0.3	34.1	7.0	18.5	3.4	5.0	5.6	2.4	0.7	0.9	24.8	16.5	23.4
2003	0.3	31.1	5.7	17.4	3.2	4.1	4.9	2.3	0.8	1.1	25.1	19.7	22.7
2004	0.2	19.6	3.0	11.0	2.3	2.3	2.9	1.3	1.3	0.9	17.4	16.5	45.6
*2004	0.2	28.5	4.6	16.6	3.4	3.5	4.3	2.0	1.0	1.2	24.8	21.9	23.4
2005	0.1	19.1	2.2	11.6	4.2	2.4	2.2	1.0	2.1	2.0	19.8	22.2	36.8
*2005	0.2	26.3	4.0	15.3	3.9	3.1	4.0	1.8	1.2	1.4	24.3	24.1	23.7
2006	0.2	24.6	3.7	14.4	4.0	2.9	3.8	1.7	1.0	1.8	23.6	25.4	24.4
2007	0.2	24.7	3.7	14.6	4.1	3.0	4.0	1.7	0.8	1.5	24.7	25.5	23.4
2008	0.2	26.6	3.6	16.5	4.2	3.1	4.0	1.6	0.8	1.0	25.1	22.1	25.0
High (Year)	3.1(1950)	46.0(1989)	21.6(1985)	18.5(2002)	9.5(1963)	5.0(2002)	13.5(1985)	4.9(1980)	2.8(1987)	12.6(1949)	27.5(1973)	25.5(2007)	69.1(1949)
Low (Year)	0.1(2005)	9.9(1949)	2.2(2005)	7.1(1986)	1.0(1983)	0.4(1982)	2.2(2005)	1.0(2005)	0.7(2002)	0.7(1998)	5.6(1949)	1.2(1952)	22.4(1988)

(Notes) 1. The number of shares has been calculated on a "Unit-of-Share" basis since 1985 Survey  
 2. The number of Trust Banks are included in that of City & Regional Banks in and before 1985 Survey

\*Figure colored in red do not include data of "livedoor Co., Ltd"