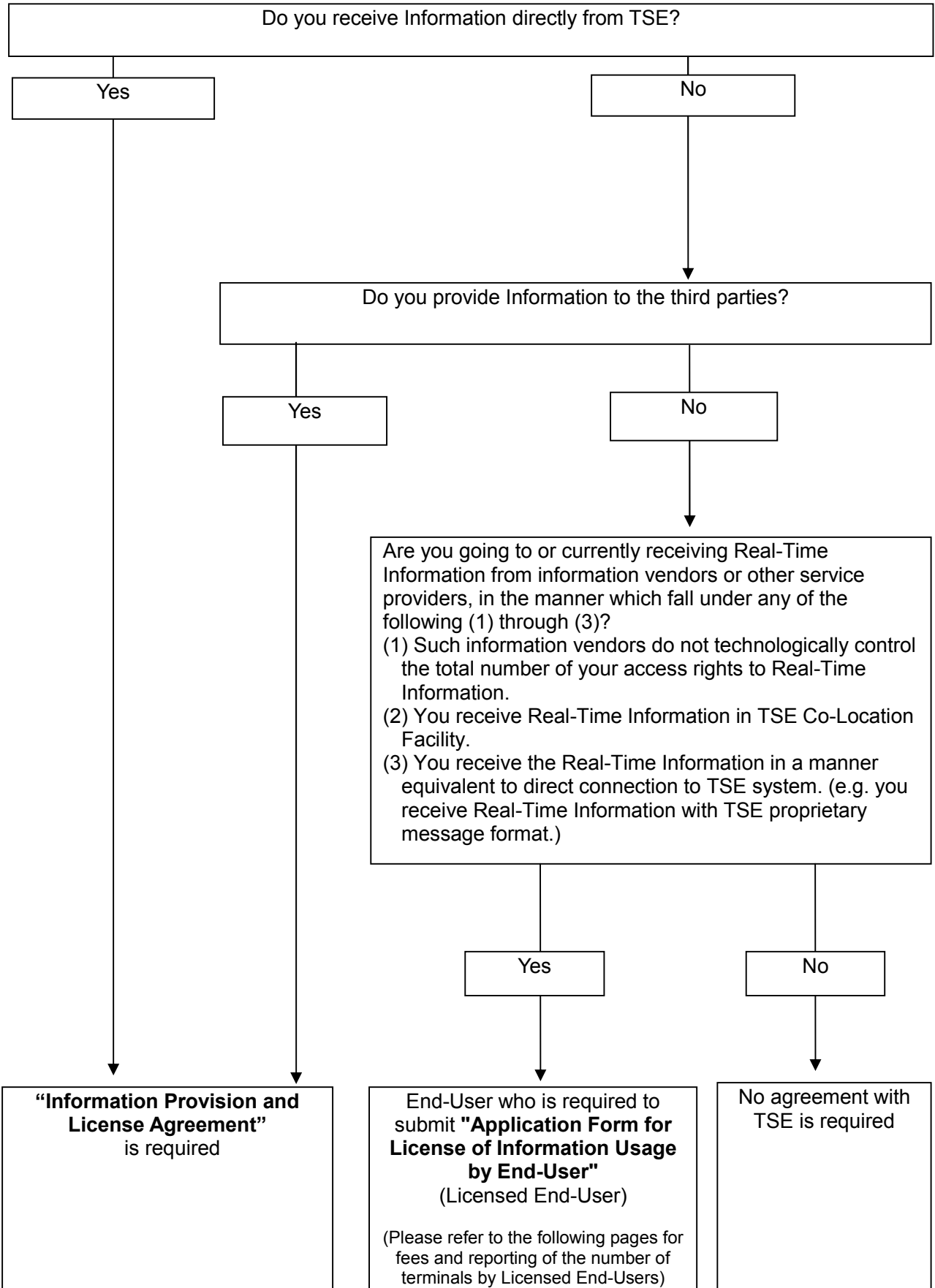
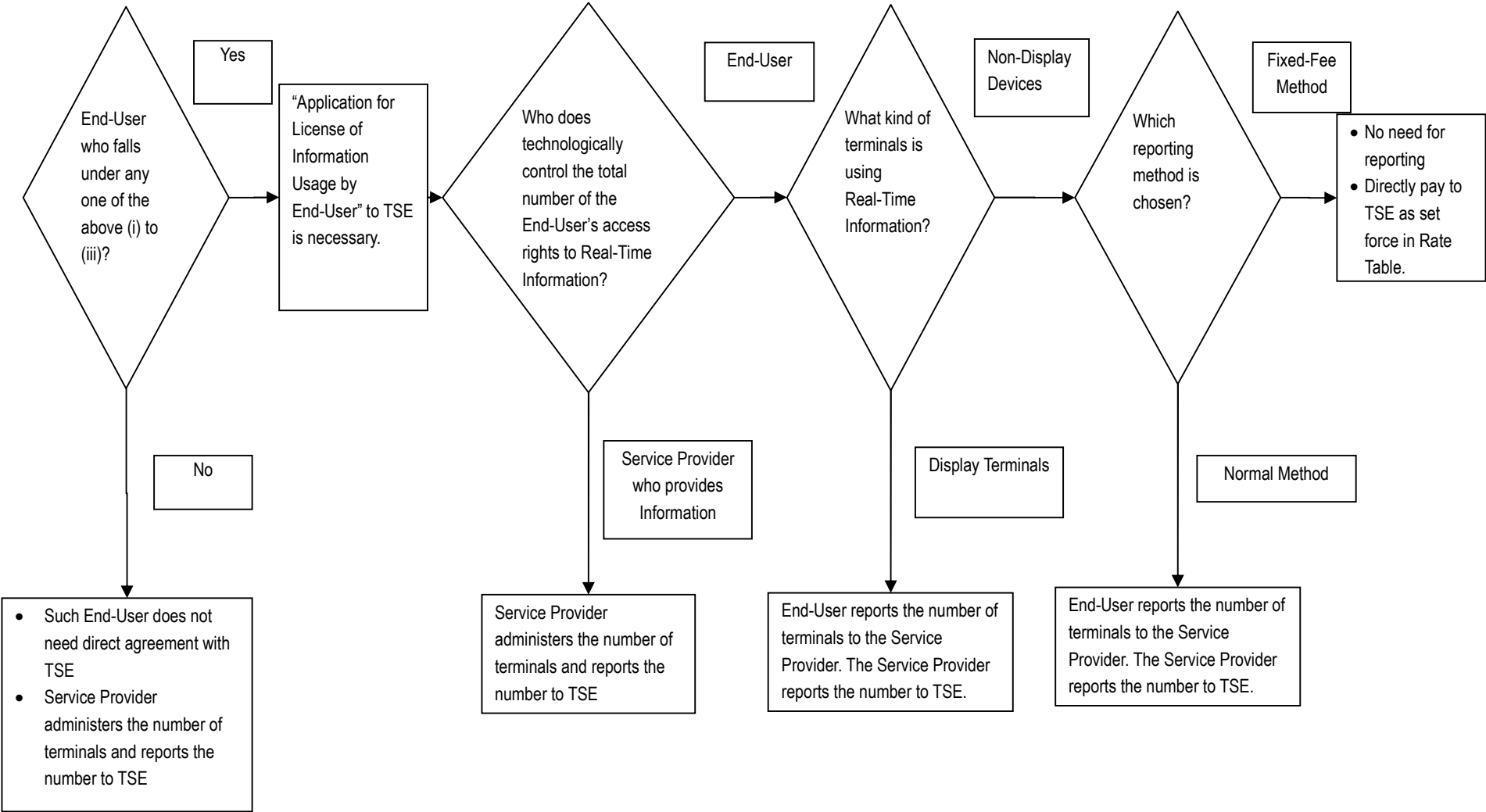


## Necessary agreement with TSE



Reporting of Real-Time Information terminal usage by Licensed End-User will be as follows: (see 7.4.4 of Policies Regarding Usage of Market Information)



Licensed End-Use will be charged the following two fees directly from TSE.

- (1) Full-Depth Feed Access Fee (100,000 JPY per month) when receiving Full-Depth information
- (2) 150,000 JPY per month when choosing Fixed Fee Method for Non-Display Devices

Accordingly, if you (1) do not receive Full-Depth information; and (2) do not use information in Non-Display Devices or choose Normal Method for Non-Display Devices, you will not be directly billed from TSE even though you still need to complete the process for becoming Licensed End-User.

